

User's Manual

WMP-G07

FCC Statement :

This device complies with Part 15 of the FCC Rules. Operation is subject to the following two conditions:

- (1) This device may not cause harmful interference.
- (2) This device must accept any interference received, including interference that may cause undesired operation.

This equipment has been tested and found to comply with the limits for a class B digital device, pursuant to part 15 of the FCC Rules. These limits are designed to provide reasonable protection against harmful interference in a residential installation.

This equipment generates, uses and can radiate radio frequency energy and, if not installed and used in accordance with the instructions, may cause harmful interference to radio communications. However, there is no guarantee that interference will not occur in a particular installation. If this equipment does cause harmful interference to radio or television reception, which can be determined by turning the equipment off and on, the user is encouraged to try to correct the interference by one or more of the following measures:

- Reorient or relocate the receiving antenna.
- Increase the separation between the equipment and receiver.
- Connect the equipment into an outlet on a circuit different from that to which the receiver is connected.
- Consult the dealer or an experienced radio/TV technician for help.

Installation and use of this Wireless LAN device must be in strict accordance with the instructions included in the user documentation provided with the product. Any changes or modifications (including the antennas) made to this device that are not expressly approved by the manufacturer may void the user's authority to operate the equipment. The manufacturer is not responsible for any radio or television interference caused by unauthorized modification of this device, or the substitution of the connecting cables and equipment other than manufacturer specified. It is the responsibility of the user to correct any interference caused by such unauthorized modification, substitution or attachment. Manufacturer and its authorized resellers or distributors will assume no liability for any damage or violation of government regulations arising from failing to comply with these guidelines.

FCC RF Radiation Exposure Statement:

This equipment complies with FCC RF radiation exposure limits set forth for an uncontrolled environment. This equipment should be installed and operated with a minimum distance of 20 centimeters between the radiator and your body.

Modular Approval

This device is intended only form OEM integrator under the following conditions:

- 1) The antenna must be installed such that 20cm is maintained between the antenna and users, and
- 2) The transmitter module may not be co-located with any other transmitter or antenna.

IMPORTANT NOTE: In the event that these conditions cannot be met (for example certain laptop configurations or co-location with another transmitter), then the FCC authorization is no longer considered valid and the FCC ID cannot be used on the final product. In these circumstances, the OEM integrator will be responsible for re-evaluating the end product (including the transmitter) and obtaining a separate FCC authorization.

End Product Labeling

This transmitter module is authorized only for use in devices where the antenna may be installed such that 20 cm may be maintained between the antenna and users (for example access points, routers, wireless ADSL modems, and similar equipment). The final end product must be labeled in visible area with the following:

“Contains TX FCC ID: **RRK2005030148-1**”

End Product Manual Information

The user manual for end users must include the following information in a prominent location “IMPORTANT NOTE: To comply with FCC RF exposure compliance requirements, the antenna used for this transmitter must be installed to provide a separation distance of at least 20cm from all persons and must not be co-located or operating in conjunction with any other antenna or transmitter.”

1.0 Scope

1.1 Document

This document is to specify the product requirements for **802.11b/g Mini-PCI Card**. This Mini-PCI Card is based on Atheros AR5005GS chipset that complied with IEEE 802.11b standard from 2.4~2.5GHz, and it can be used to provide up to 11Mbps for IEEE 802.11b and 54Mbps/108Mbps for 2.4GHz IEEE 802.11g to connect your wireless LAN.

With seamless roaming, fully interoperability and advanced security with WEP standard, **802.11b/g Mini-PCI Card** offers absolute interoperability with different vendors' 802.11b/g Access Points through the wireless LAN.

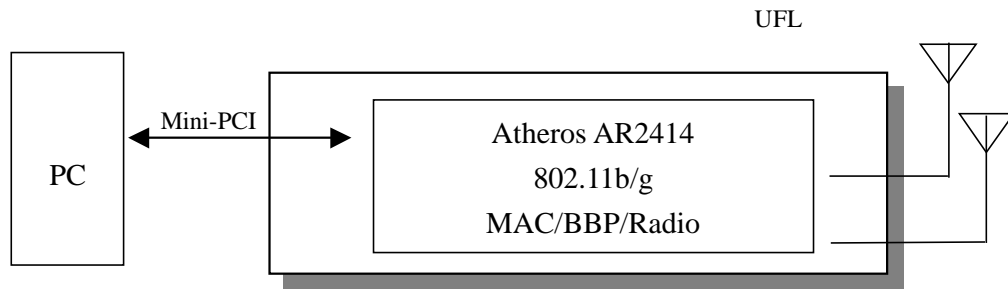
1.2 Product Features

- ÿ Compatible with IEEE 802.11b high rate standard to provide wireless 11Mbps data rate
- ÿ Compatible with IEEE 802.11g higher speed standard to provide wireless 54Mbps data rate, and the turbo mode of 108Mbps (For USA)
- ÿ Operation at 2.4 ~ 2.5GHz frequency band to meet worldwide regulations
- ÿ Dynamic data rate scaling at 6, 9, 12, 18, 24, 36, 48, 54 and 108Mbps for 802.11g
- ÿ Dynamic data rate scaling at 1, 2, 5.5, and 11Mbps for IEEE 802.11b
- ÿ Maximum reliability, throughput and connectivity with automatic data rate switching
- ÿ Supports wireless data encryption with 64/128/152-bit WEP for security
- ÿ Supports infrastructure networks via Access Point and ad-hoc network via peer-to-peer communication
- ÿ Dual UFL antenna connectors for diversity
- ÿ Support Super G mode to provide the higher data rate and throughput
- ÿ Supports WPA and AES enhanced security
- ÿ Supports DFS/TPC for European operation
- ÿ Supports VLAN tagging
- ÿ Friendly user configuration and utilities
- ÿ Drivers support Windows 98SE, ME, 2K, and XP
- ÿ Supports Mini-PCI Type IIIB form factor

2.0 Requirements

The following sections identify the detailed requirements of the **802.11g Mini-PCI Card**.

2.1 Functional Block Diagram



2.2 General Requirements

2.2.1 IEEE 802.11b Section

#	Feature	Detailed Description
2.2.1.1	Standard	Y IEEE 802.11b
2.2.1.2	Radio and Modulation Schemes	Y DQPSK, DBPSK, DSSS, and CCK
2.2.1.3	Operating Frequency	Y 2400 ~ 2497MHz ISM band
2.2.1.4	Channel Numbers	Y 11 channels for United States 13 channels for Europe Countries 14 channels for Japan
2.2.1.5	Data Rate	Y 11, 5.5, 2, and 1Mbps
2.2.1.6	Media Access Protocol	Y CSMA/CA with ACK
2.2.1.7	Transmitter Output Power	Y Typical 18dBm at 11, 5.5, 2, and 1Mbps
2.2.1.8	Receiver Sensitivity	Y Typical -84dBm for 11Mbps @ 8% PER Y Typical -90dBm for 2Mbps @ 8% PER

2.2.2 IEEE 802.11g Section

#	Feature	Detailed Description
2.2.2.1	Standard	Y IEEE 802.11g
2.2.2.2	Radio and Modulation Schemes	Y BPSK, QPSK, 16QAM, 64QAM, and OFDM
2.2.2.3	Operating Frequency	Y 2400 ~ 2497MHz ISM band
2.2.2.4	Channel Numbers	Y 11 channels for United States 13 channels for Europe Countries 13 channels for Japan
2.2.2.5	Data Rate	Y 54, 48, 36, 24, 18, 12, 9, and 6Mbps Y 108Mbps for USA only
2.2.2.6	Media Access Protocol	Y CSMA/CA with ACK
2.2.2.7	Transmitter Output Power	Y Typical RF Output Power at each Data Rate Y +10 ~ 14dBm at 54Mbps Y +11 ~ 15dBm at 48Mbps Y +13 ~ 15dBm at 36Mbps Y +17 ~ 18dBm at 24, 18, 12, 9, and 6Mbps
2.2.2.8	Receiver	Y Typical Sensitivity at Which Frame (1000-byte

#	Feature	Detailed Description
	Sensitivity	PDUs) Error Rate = 10% Ψ -87dBm at 6Mbps Ψ -86dBm at 9Mbps Ψ -85dBm at 12Mbps Ψ -83dBm at 18Mbps Ψ -80dBm at 24Mbps Ψ -76dBm at 36Mbps Ψ -71dBm at 48Mbps Ψ -66dBm at 54Mbps

2.2.3 General Section

#	Feature	Detailed Description
2.2.3.1	Antenna Connector	Ψ Dual UFL antenna connectors
2.2.3.2	Operating Voltage	Ψ 3.3VDC +/- 10%
2.2.3.3	Current Consumption	Ψ 500mA at continuous transmit mode Ψ 300mA at continuous receive mode Ψ 30mA at sleep mode
2.2.3.4	Form Factor and Interface	Ψ Mini-PCI Type IIIB form factor
2.2.3.5	LEDs	Ψ External LED function supported

2.3 Software Requirements

The Configuration Software supports Microsoft Windows 98SE, ME, 2000, and XP. This configuration software includes the following functions:

Y Information

Information allows you to monitor network status.

Y Configuration

Configuration allows you to configure parameters for wireless networking.

Y Security

Supports enhanced security WEP, 802.1x,WPA.

2.3.1 Information

#	Feature	Detailed Description
2.3.1.1	General Information	Y General Information shows the name of Wireless Adapter, Adapter MAC Address, Regulatory Domain, Firmware Version, and Utility Version.
2.3.1.2	Current Link Information	Y Current Link Information shows the Current Setting ESSID, Channel Number, Associated BSSID, Network Type (infrastructure or Ad-hoc network), WEP Status (enable or disable), Link Status (Connect or Dis-connect), 802.11g Transmit Speed (6, 9, 12, 18, 24, 36, 48, 54Mbps), 802.11b Transmit Speed (1, 2, 5.5, 11Mbps), Signal Strength, and Link Quality.
2.3.1.3	Site survey	Y To search the neighboring access points and display the information of all access points.

2.3.2 Configuration

#	Feature	Detailed Description
2.3.2.1	ESS ID	Y Input an SSID number if the roaming feature is enabled Y Supports for ASCII printable characters.
2.3.2.2	Network Type	Y Ad-hoc Mode and 802.11 Ad-hoc Mode for network configurations that do not have any access points Y Infrastructure Mode for network configurations with access points

#	Feature	Detailed Description
2.3.2.3	Power Save	Y Extend the battery life of clients by allowing the client to sleep for short periods of time while the Access Point buffers the messages.
2.3.2.4	RTS Threshold	Y Set the number of bytes used for fragmentation boundary for messages
2.3.2.5	Fragment Threshold	Y Set the number of bytes used for RTS/CTS boundary
2.3.2.6	Transmission Speed	Y This indicates the communication rates. Select appropriate transmission speed to match your wireless LAN settings
2.3.2.7	Roaming	Y Support Automatic or Manual Rescan to associate with access point.

2.3.3 Security

#	Feature	Detailed Description
2.3.3.1	Encryption	Y RC4 encryption algorithm Y Support 64/128/152 bit WEP encryption Y Support open system and shared key authentication
2.3.3.2	WEP Management	Y Four WEP keys can be selected Y STA with WEP off will never associate any AP with WEP enabled Y WEP Key Format: Option for Hex format
2.3.3.3	802.1x	Y Support EAP-TLS, EAP-TTLS, and EAP-PEAP
2.3.3.4	WPA	Y Support WPA-PSK and WPA-EAP Y Support Cipher Mode AES and TKIP

2.4 Mechanical Requirements

#	Feature	Detailed Description
2.4.1	Length	Y 44.6mm
2.4.2	Width	Y 50.75mm
2.4.3	Height	Y 5mm

2.5 Compatibility Requirements

This device passes the following compatibility requirements.

#	Feature	Detailed Description
2.5.1	Wi-Fi	Y Meet Wi-Fi certification for IEEE 802.11 product
2.5.2	WHQL	Y Meet applicable WHQL certification

#	Feature	Detailed Description
		requirements
2.5.3	Physical Layer and Functionality	Y Meet ALPHA Engineering Test Plan and Test Report

2.6 Requirements of Reliability, Maintainability and

Quality

#	Feature	Detailed Description
2.6.1	MTBF	Y Mean Time Between Failure > 30,000 hours
2.6.2	Maintainability	Y There is no scheduled preventive maintenance required
2.6.3	Quality	Y The product quality is followed-up by ALPHA factory quality control system

2.7 Environmental Requirements

#	Feature	Detailed Description
2.7.1	Operating Temperature Conditions	Y The product is capable of continuous reliable operation when operating in ambient temperature of 0 °C to +55°C.
2.7.2	Non-Operating Temperature Conditions	Y Neither subassemblies is damaged nor the operational performance is degraded when restored to the operating temperature after exposing to storage temperature in the range of -20 °C to +75 °C.
2.7.3	Operating Humidity conditions	Y The product is capable of continuous reliable operation when subjected to relative humidity in the range of 10% and 90% non-condensing.
2.7.4	Non-Operating Humidity Conditions	Y The product is not damaged nor the performance is degraded after exposure to relative humidity ranging from 5% to 95% non-condensing

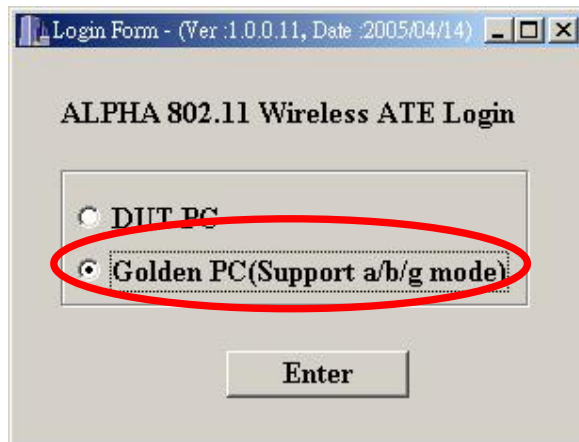
I Test Program Operation Guide:

[Step1] Run program in Desktop at server (see Figure 1) to open test window (see Figure 2).

(Figure 1)



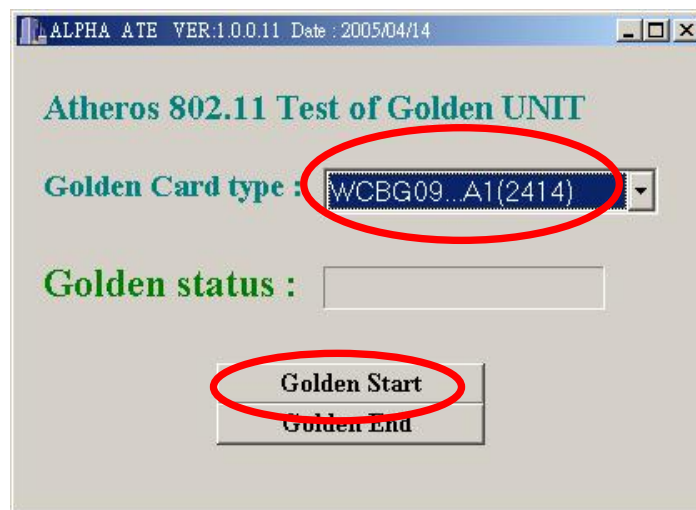
(Figure 2)



[Step 2] (a) Select Golden Card Type as you need (WCBG09..A1), then click "Golden Start" button (Figure 3).

(b) Figure 3 pops up. The emersion of DOS window means Golden Unit is functioning well.

(Figure 3)



(Figure 4)

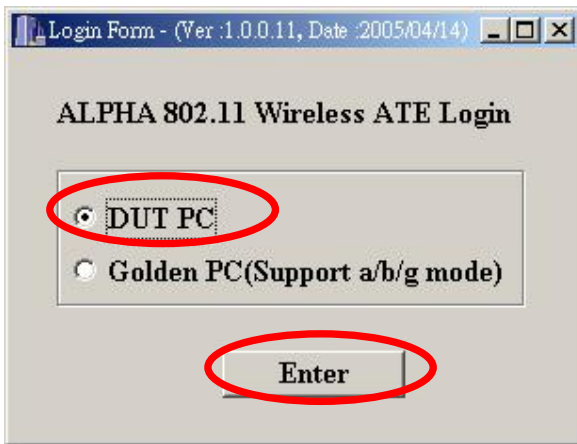
```

C:\Program Files\QualATE_v35\Test\golden>
| c - CI Throughput test menu |
| p - EEPROM Function |
| s - CSwitch test card |
| n - (M)anufacturing/Calibration Test |
| y - Disable JaG/ying |
| u - Update Comment to Log File |
| m - (M)odality Menu |
| q - QUIT |
|-----|
Reading in Cal Section from ap5901a2_ck22ag.exp
|-----|
| Manufacturing Test & Calibration Options: |
| d - (D)evice Under Test Begin |
| g - (G)olden Unit Test Begin |
| q - QUIT |
|-----|
Modes supported in MI exp file (ap5901a2_ck22ag.exp) are : 11a 11b 11g
Reading in Target Powers and CTS Info from callrgtPwr_ap5901a2_ck22ag.txt
Golden Unit Program is running. Hit any key to quit...
* socket created, waiting for connection...

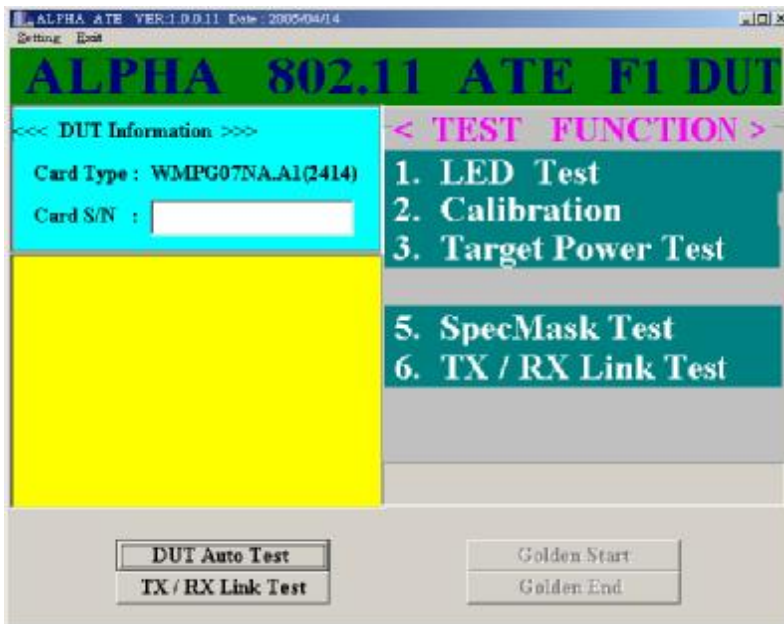
```

[Step 3] Select "DUT PC" (Figure 5) and press "ENTER" button to show the test (Figure 6)

(Figure 5)

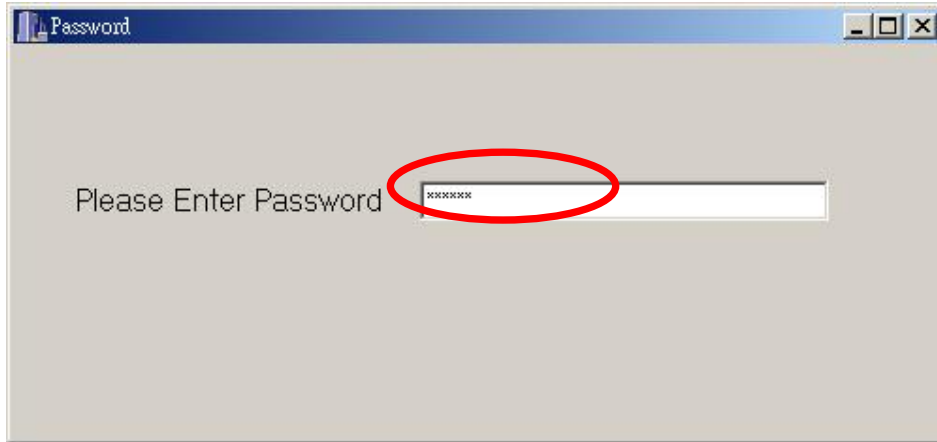


(Figure 6)



[Step 4] press “setting ”and then show form Figure 7,enter Password “abcdef” will show Figure 8, press “確定” button.

(Figure 7)

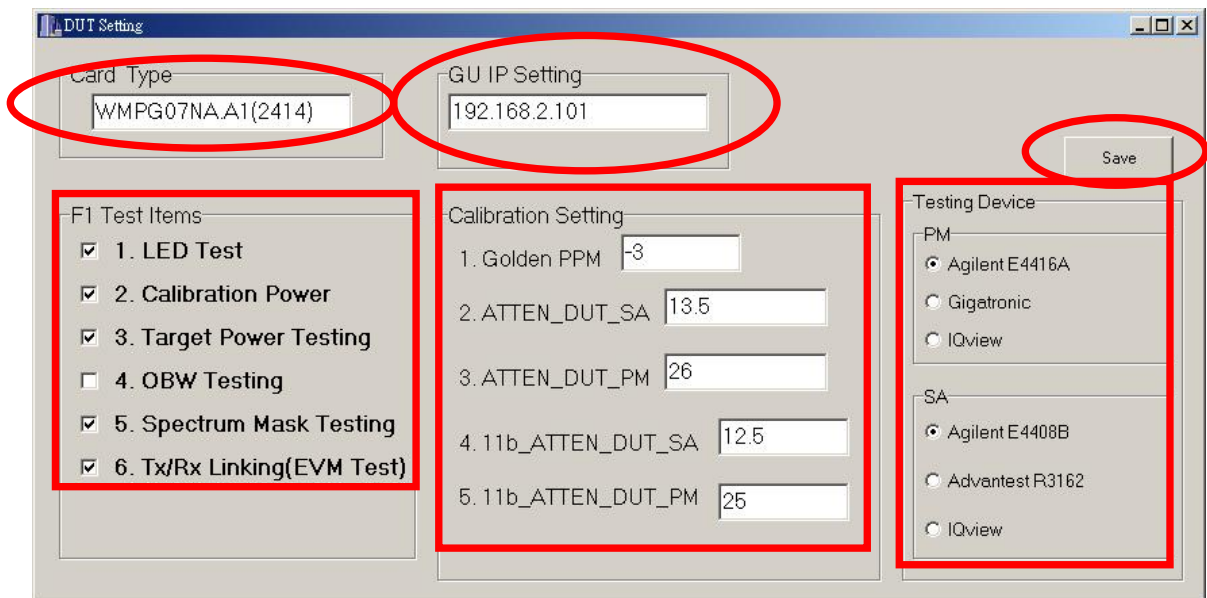


(Figure 8)



[Step 5] chose “setting->DUT setting”, will show Figure 9,and chose and set the test item and equipment.

(Figure 9)



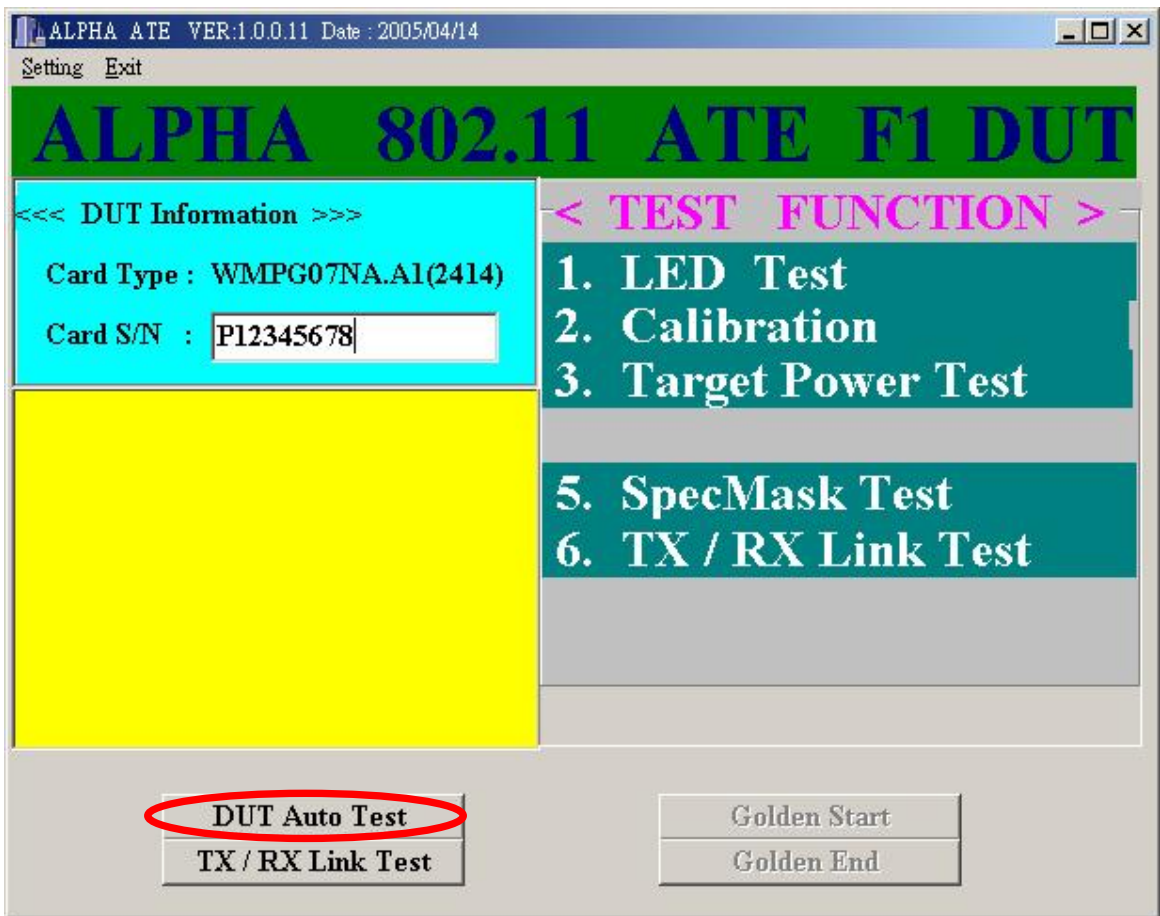
(Figure 10)



[Step 6] Scan the serial number on PCBA.

[Step 7] Start the test by clicking "DUT Auto Test" button (see Figure 11).

(Figure 11)



Remark: Item 2 & 3 are for the Target Power Test, items 5 are for SpecMask Test and item 6 is for TX and RX Link Test.